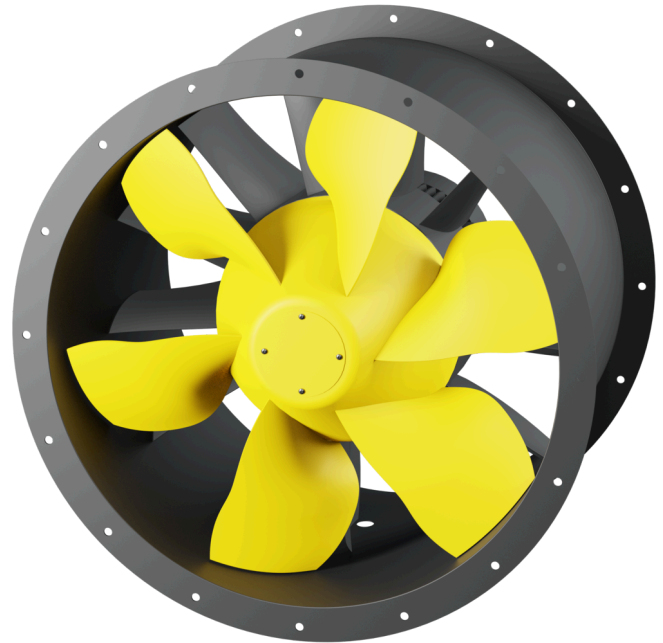


AL 710 D6 01

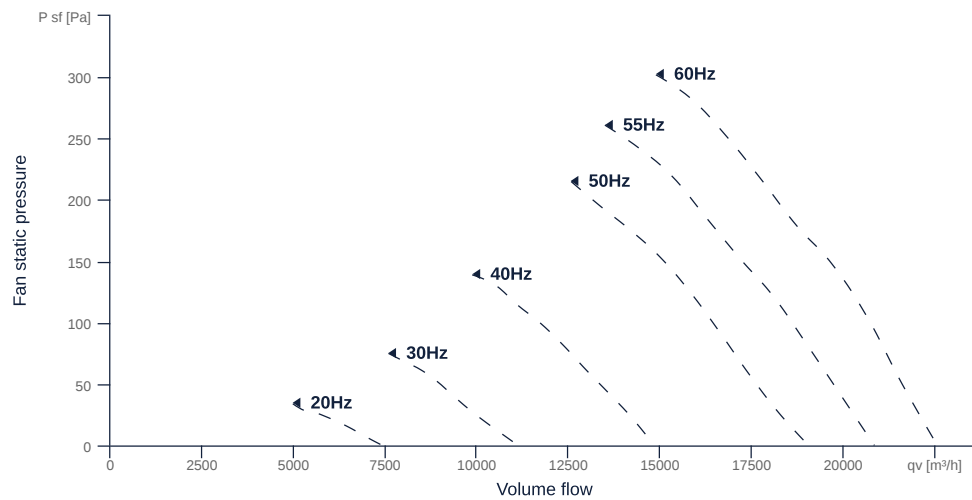
154138

- Innovative, high-efficiency axial fan
- Optimally tuned, CFD-optimized aerodynamics
- Housing weight optimized, powder coated
- Efficient IE3 motor, frequency controllable
- Conveyed medium temperature up to 60 °C in continuous operation
- Exceeds current ErP regulation by 15 - 20%



FAN CURVES

Name	Value	Unit
Volume flow	0	m³/h
Pressure	0	Pa



to the product detail page

GENERAL DATA

Name	Value	Unit	Formula symbol
Labeling	CE, UKCA		
Duct size	-		$W \times H_{\text{duct}}$
Pipe connection size (DN)	DN710		DN
Rated voltage (entire device)	400	V	U_{rated}
Phases (entire device)	3~		phase
Electrical protection (entire device)	6 A		fuse
Housing material	Coated steel		matcasing
Impeller material	Coated steel		matimpeller
IP-protection class (entire device)	IPX4		IP_{compl}
IP-Protection class (terminal box)	IP55		IP_{ebox}
Weight	72.5	kg	m
Fan type	Axial		Fan _{type}
Category / Installation situation	B		cat

MAXIMAL DATA

Name	Value	Unit	Formula symbol
Max. power consumption (device)	2212	W	$P_{\text{ed, max}}$
Max. operating current (device)	4.7	A	$I_{\text{ed, max}}$
Max. speed	1180	1/min	n_{max}
Max. stat. efficiency	53.6	%	η_{es}
Max. fan efficiency	68.3	%	η_{e}
Max. flowrate	22569	m ³ /h	$q_{\text{v, max}}$
Max. stat pressure	320	Pa	$p_{\text{sf, max}}$
Max. medium temperature	60	°C	$T_{\text{m, max}}$
Max. environment temperature	60	°C	$T_{\text{amb, max}}$
Min. environment temperature	-20	°C	$T_{\text{amb, min}}$



MOTOR DATA

Name	Value		Unit	Formula symbol
	50 Hz	60 Hz		
Rated frequency (device)		50		f
Motor type		AC 3~		phase
Control type		frequency-controlled		ctrltype
Installation type		IRM (In)		install
Rotation direction		right		rotation
Isolation class		ISO F		ISOclass
Protection class		IP55		IPmotor
Is pole-changeable		No		polexch
Type of power supply		AC 3~		pwrsupmotor
Number of poles (1)		6.000000		num polesw1
Connection	Δ	Y		wiringw1
Connection (wiring 2)	Y			wiringw2
Rated voltage	230	460	V	U _{rated, f1}
Rated voltage (wiring 2)	400		V	U _{rated, f2}
Rated current	9.2	4.64	A	I _{rated, f1}
Rated current (wiring 2)	5.29		A	I _{rated, f2}
Shaft power	2200	2200	W	P _{out, f1}
Shaft power (wiring 2)	2200		W	P _{out, f2}
Speed	960	1165	1/min	n _{f1}
Speed (wiring 2)	960		1/min	n _{f2}
Starting current	59.8	35.3	A	I _{start, f1}
Starting current (wiring 2)	34.4		A	I _{start, f2}
Efficiency	84.5	87.5	%	$\eta_m, f1$
Efficiency (wiring 2)	84.5		%	$\eta_m, f2$
Efficiency class	IE3	IE3		IE _{motor}
Min. temperature	-20	-20	°C	T _{motor, min}
Cos Phi	0.710000	0.680000		cos φ
UL-Certification motor		UL recognized		ULcert



to the product detail page

AL 710 D6 01

154138

ERP DATA (LOT11)

Name	Value	Unit	Formula symbol
Speed at the energy efficiency optimum	1176	1/min	n_{opt}
Efficiency level	69.5	%	N
Efficiency category	total		cat _{efficiency}
Input power of the motor at the energy efficiency optimum	2.25	kW	$P_{e, opt}$
Overall efficiency	73.5	%	η_{ges}
Measurement category	B		meas cat
Fan pressure at energy efficiency optimum	331	Pa	p_f, opt
Flowrate at energy efficiency optimum	17038	m ³ /h	Q_v, opt

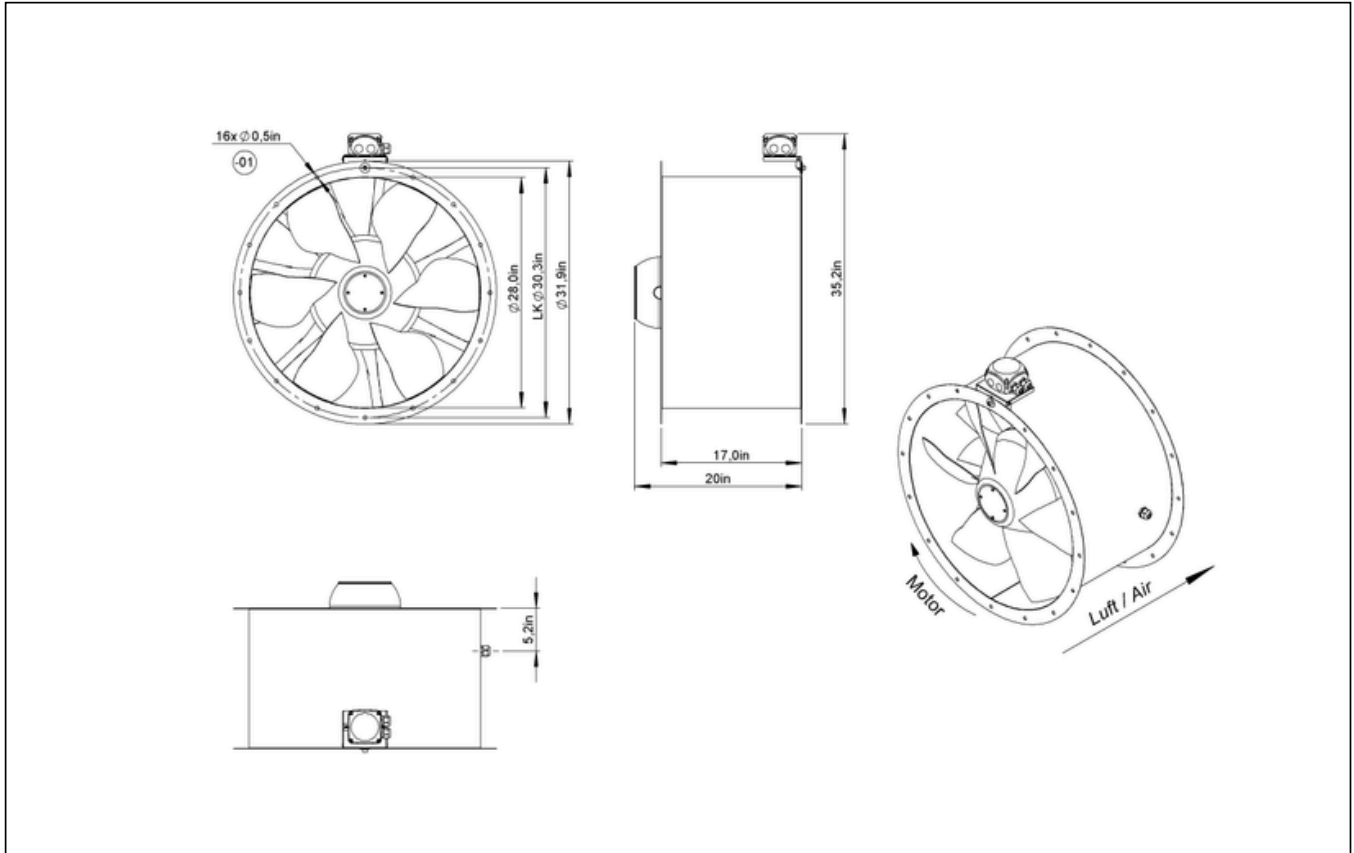


[to the product detail page](#)

AL 710 D6 01

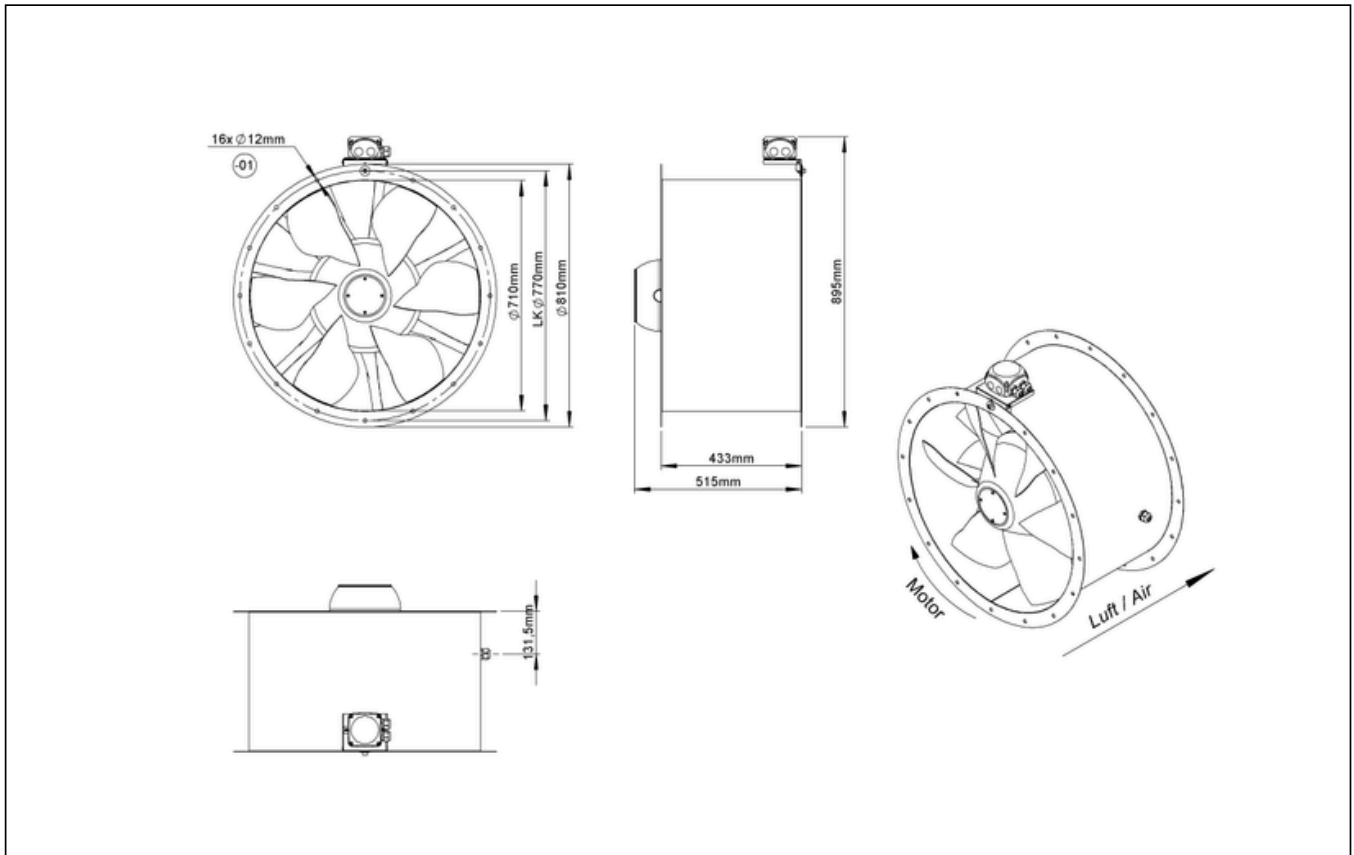
154138

CIRCUIT DIAGRAMS / DIMENSIONAL DRAWINGS



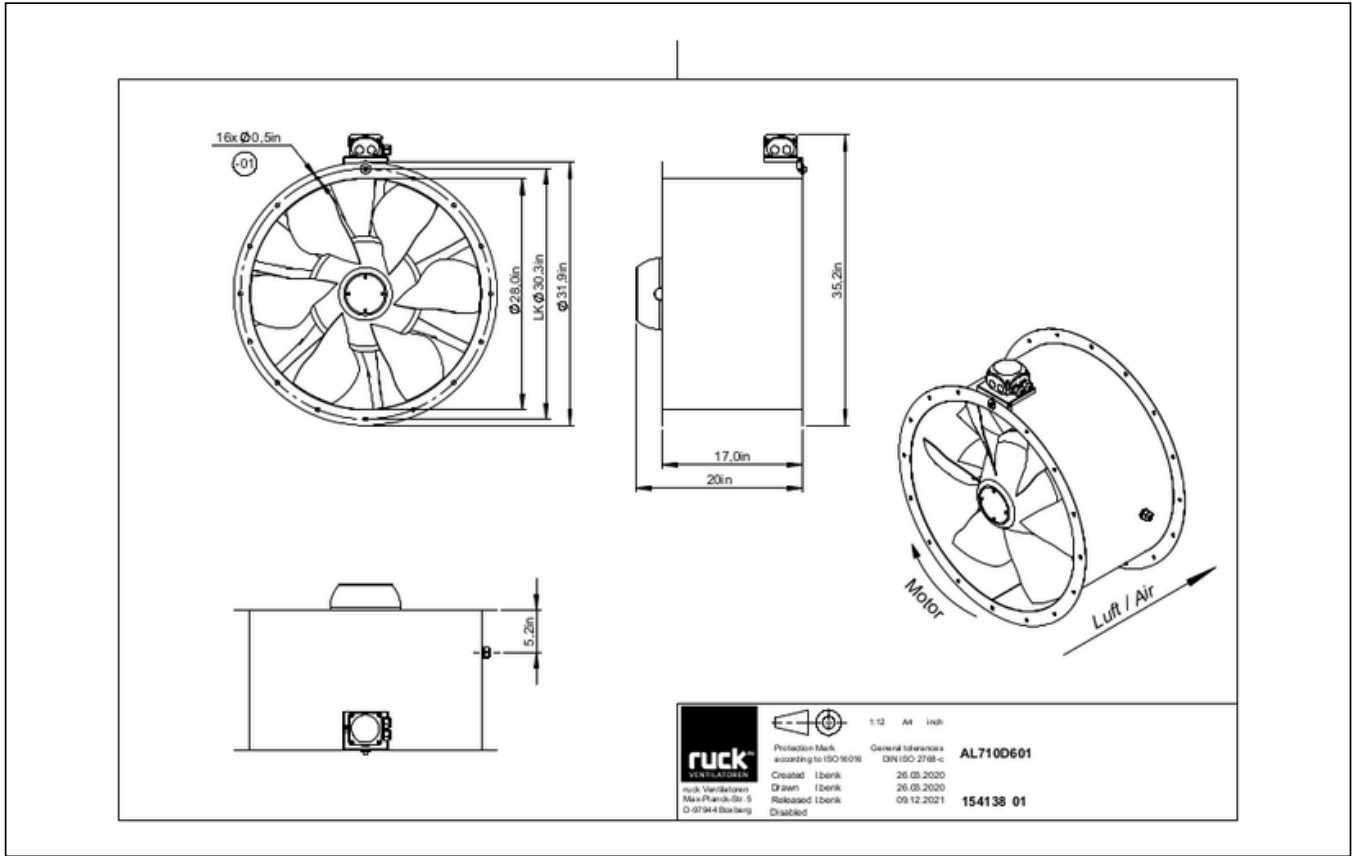
AL 710 D6 01

154138



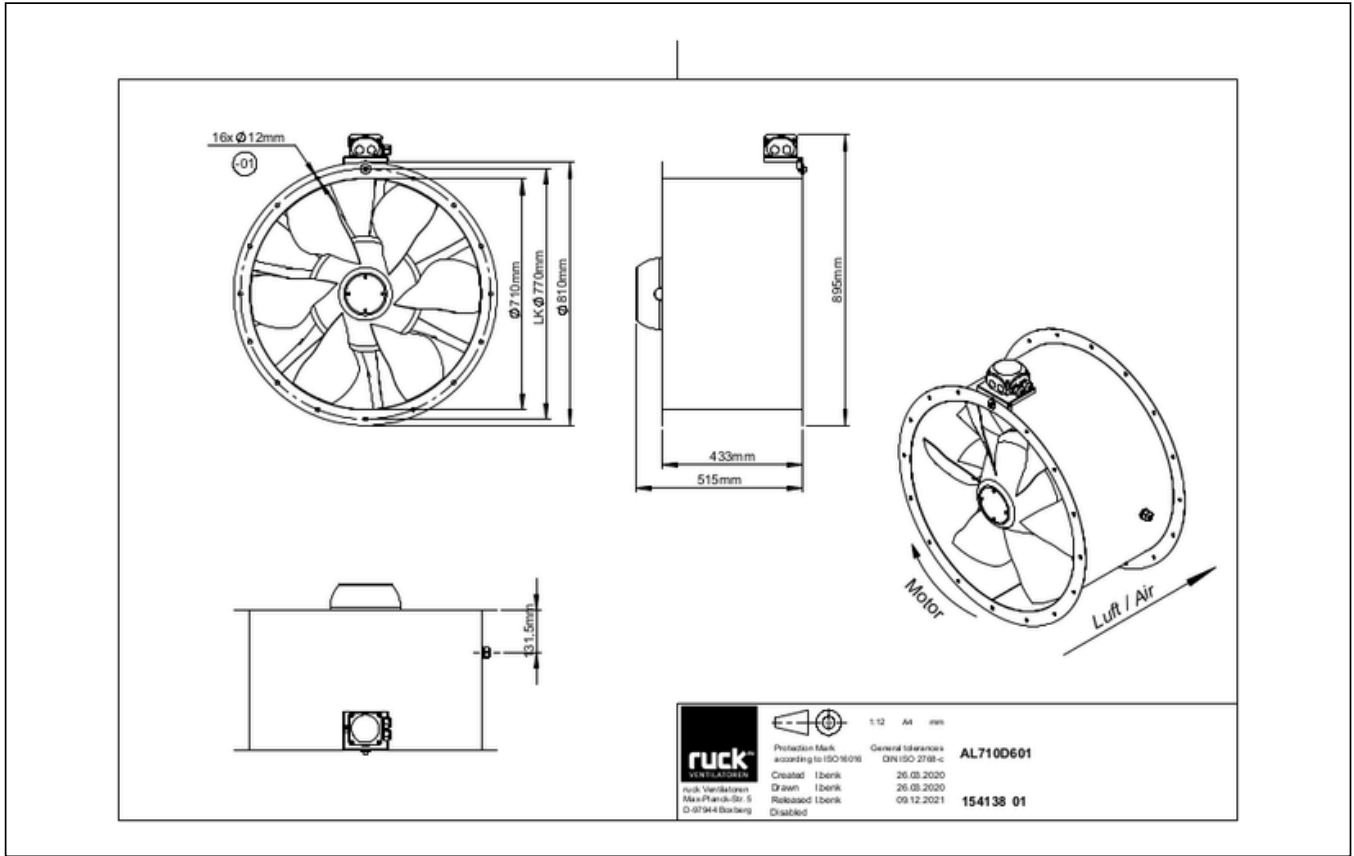
AL 710 D6 01

154138



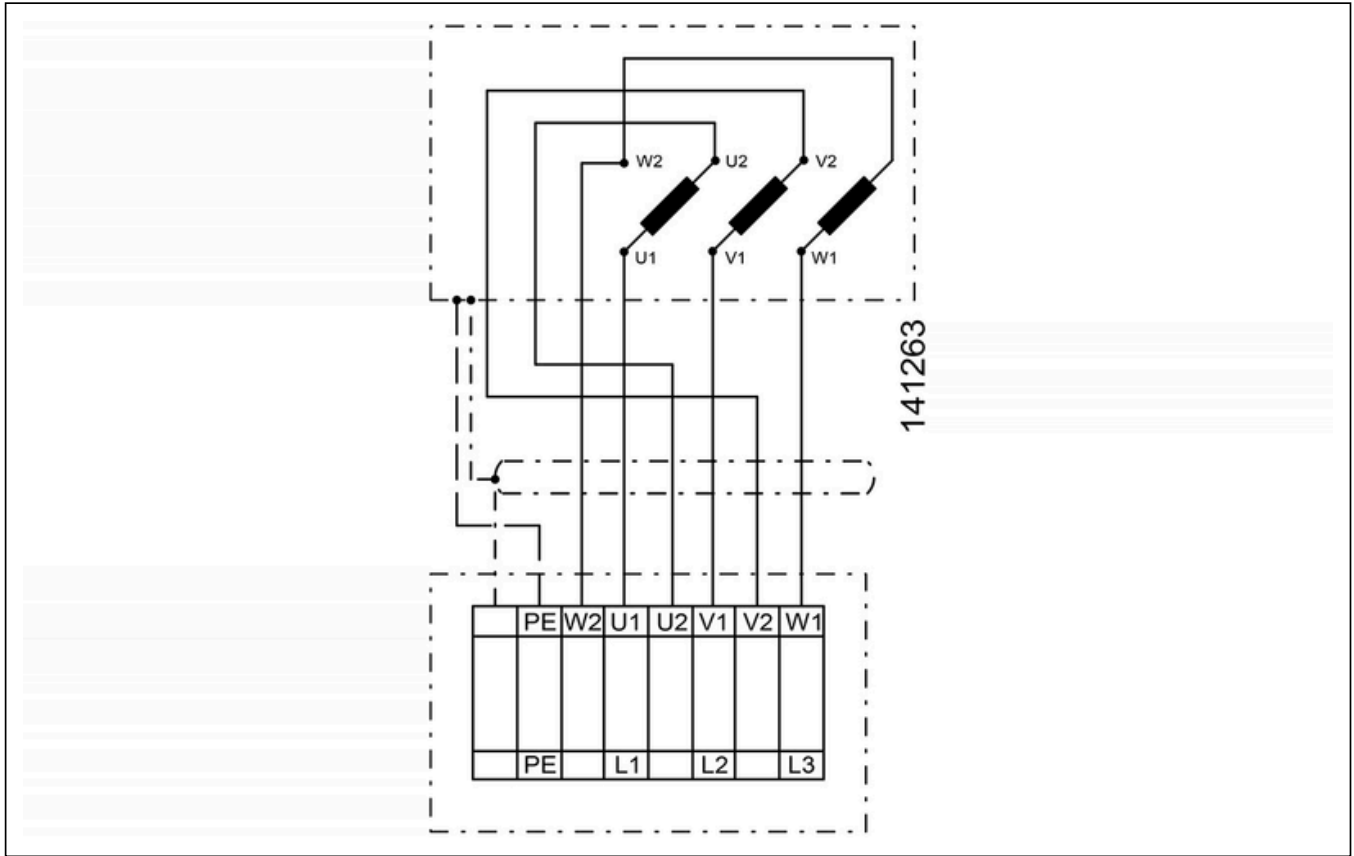
AL 710 D6 01

154138



AL 710 D6 01

154138



to the product detail page

AL 710 D6 01

154138

MECHANICAL ACCESSORIES

RVK 710 | 153914



- Automatic tube shutter
- Sheet steel, powder coated
- For vertical installation
- Flange mounting

RVK H 710 | 154879



- Automatic tube shutter
- Sheet steel, powder coated
- For horizontal installation
- Flange mounting

RVS 710 | 154201



- Tube connection spigot
- Sheet steel, powder coated
- Suitable for outdoor installation
- Flange mounting

ESD 710 | 153939



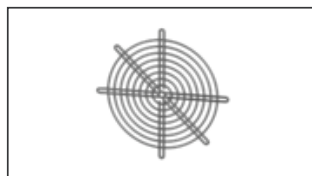
- Inlet cone
- Steel sheet, powder coated
- Flange mounting

FAL 710 | 154812



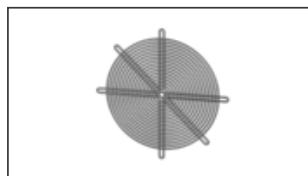
- Mounting foot
- Sheet steel, powder coated

SGW 710 | 154056



- Protection grille, wide meshed
- Steel sheet, galvanized
- Flange mounting

SGE 710 | 154083



- Protection grille, narrow meshed
- Steel sheet, galvanized
- Flange mounting

FSD 07 | 155504



- Set of 4 vibration dampers
- Made of natural rubber, hardness 55 Shore A

RAF 710 | 154024



- Round flange
- Sheet steel, powder coated

RAS 710 | 154253



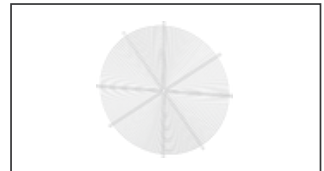
- Round spigot, flexible
- Galvanized steel sheet, plastic band (PES)
- Temperature resistant up to 75 °C
- Flange mounting

FSD 04 | 155501



- Set of 4 vibration dampers
- All metal design, galvanized

SGW 800 | 154057



- Protection grille, wide meshed
- Steel sheet, galvanized
- Flange mounting

MR 710 | 165872



- Mounting ring
- For vertical mounting
- Powder-coated sheet steel
- Flange mounting DN 710



to the product detail page

ELECTRICAL ACCESSORIES

MS 03 | 140411



- Motor protection switch with Isolator switchfunktion
- $I_{max} = 400\text{ V}$, 50/60 Hz
- Max. 2.2 kW
- Protection class IP 55

MTP 20 | 128146



- Potentiometer 10 kΩ
- Switching contact 1A/250V AC - 2,5A/12V DC
- Max. ambient temperature 50 °C
- VDE

MTP 30 | 143289



- Stepped potentiometer 10 kΩ
- Step 1 + 2 settable 10 % - 100 % Vdc
- Step 3 100 % Vdc
- Supply voltage +10 Vdc

SEN AIR | 148641



- Airflow and temperature transducer
- Measuring range temperature 0...+50 °C
- With adjustable switching threshold (air speed)
- Measuring range air velocity up to 20 m/s

CON P1000 | 115259



- Constant pressure control
- Actual value display possible via optional control unit
- Output 0-10 V DC + FC enable + setpoint reached
- Pressure setting by means of decade switch

FU 22 32 | 155187



- Frequency converter IP66
- Supply voltage 230 V 1~ 50/60 Hz
- Output voltage 0 - 230 V 3~
- Fire mode function (smoke extract fans)

FU 22 34 | 155189



- Frequency converter
- Supply voltage 400 V 3~ 50/60 Hz
- Output voltage 0 - 400 V 3~
- Fire mode function (smoke extract fans)

FU 22 31 | 155186



- Frequency converter
- Supply voltage 230 V 1~ 50/60 Hz
- Output voltage 0 - 230 V 3~
- Protection class IP 20, for switch cabinet

FU 22 33 | 155188



- Frequency converter
- Supply voltage 400 V 3~ 50/60 Hz
- Output voltage 0 - 400 V 3~
- Protection class IP 20, for switch cabinet

GS 02 | 169671



- Isolator switch
- $U_{max} = 400\text{ V}$, 50/60 Hz
- Switching capacity 400 V 3~ = 7,5 kW
- $I_{max} = 25\text{ A}$



to the product detail page